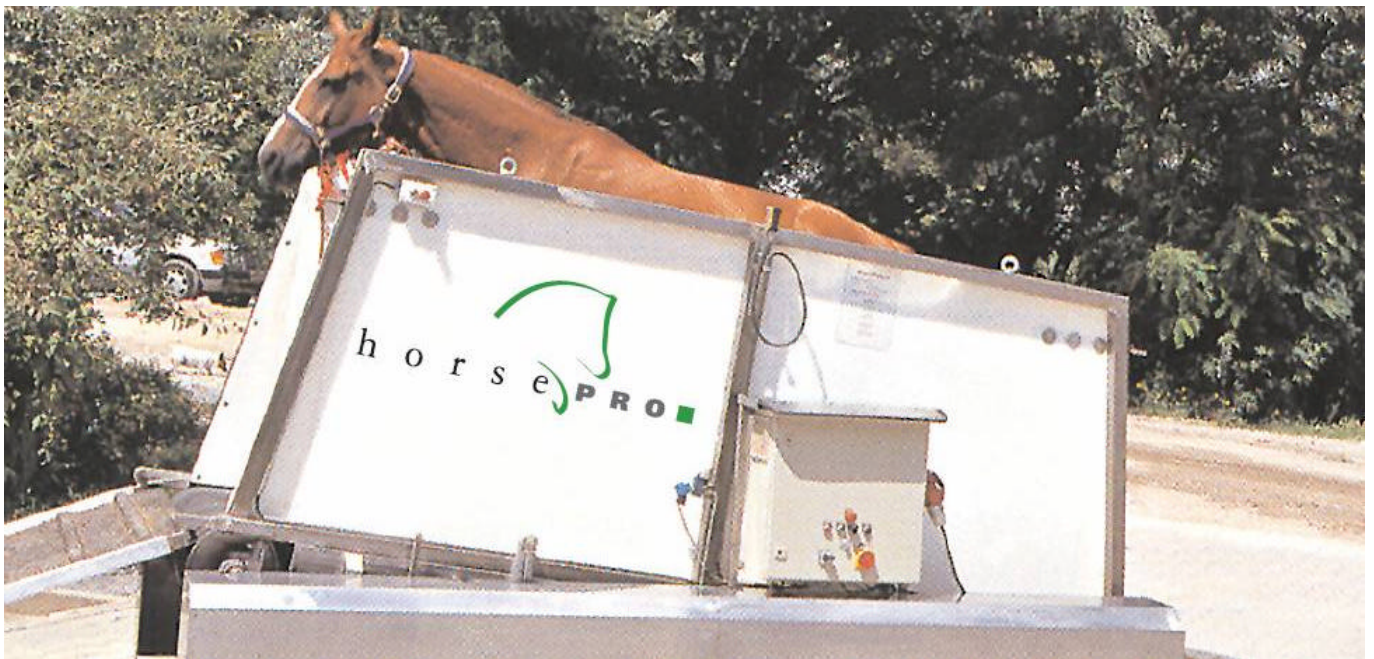


Rainbow [®]

Freizeitanlagen und Solarienbau

h o r s e  P R O ■



Dipl. Ing. (FH) Marko Turnscek
Ringstr.27

75050 Gemmingen

Tel. 0049-7267 961603

Fax 0049-7267 9619792

Internet: www.rainbow-solarien.de

Technical Properties

horsePRO PowerTrainer | "The" horse treadmill made from high-grade steel



The horsePRO PowerTrainer is constructed of a high grade stainless steel frame with side panels that are made from a robust kick proof synthetic material. The horse moves on an endurable long lasting band that gives them optimal grip and an even foot surface that is vibration free, enabling as little wear and tear on the horse as possible. The band speed is easily adjusted on a computer controlled system. The horsePRO PowerTrainer doesn't function on the usual roller treadmill system. Instead there is a smooth plate under the band that optimises the level foot surface.

Effect

horsePRO PowerTrainer | "The" horse treadmill made from high-grade steel



The positive workout of this training device is a benefit for the high performance development of horses in all disciplines of the sport.

Benefits

Through proven technology the horsePRO PowerTrainer gives real support for the health, fitness and well being of your horse.

The horsePRO PowerTrainer furthers the development of the back muscles and those of the hind quarters.

It's optimal for the development of muscle power, coordination and condition of the horse.

The horsePRO-PowerTrainer allows the horse to use it's natural desire for movement.

Vets recommend the installation of the horsePRO PowerTrainer for a controlled training advancement, convalescence, prevention of muscle and bone problems and injuries.

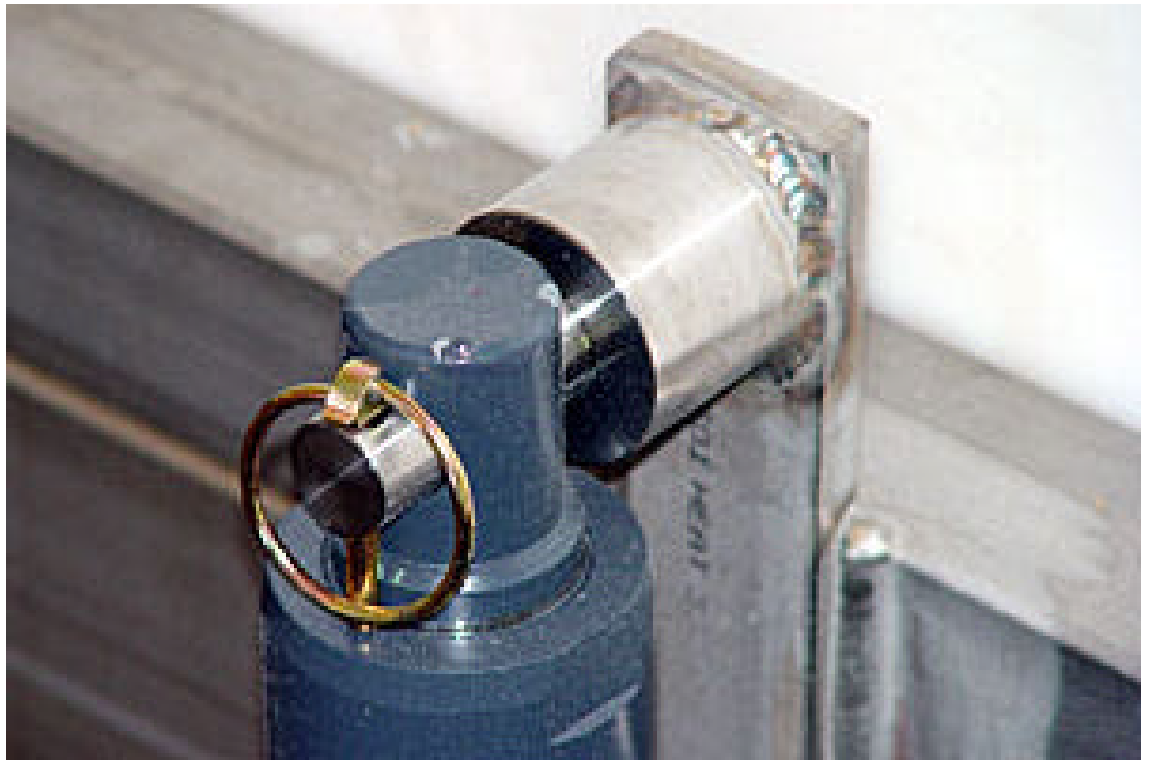


Variable Programmable Training Schemes

The training and therapy programme for your horses can be individually designed and varied as often as you desire. The speed can be smoothly and evenly regulated without sudden changes to suite your horse's individual needs. The steepness is also adjustable and is hydraulically controlled with the desired grade being set via the computer.

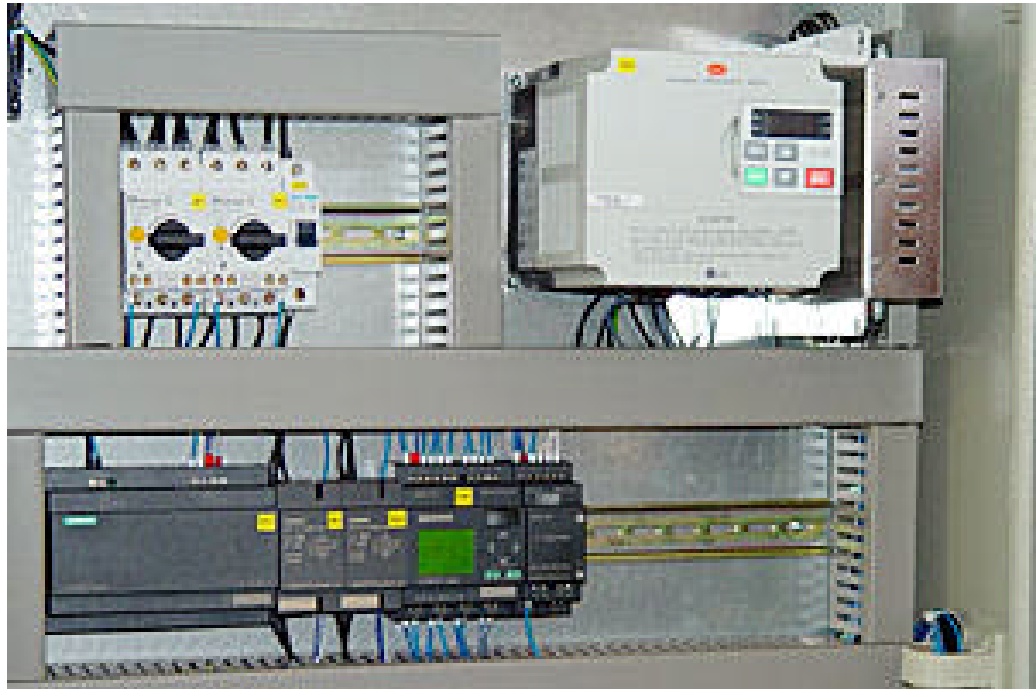
The **horsePRO-PowerTrainer** is the product of years of development with the input from veterinarians, riders and breeders who have generously donated their experience and knowledge.

It can be delivered with or without the roof structure to suite the individual client's wishes. Clients can individually choose the isolation, the height and width, as well as the colour and densification.



Safety Packet

The horsePRO PowerTrainer is well known for its durability and greatest possible safety for you and your horse. The horsePRO PowerTrainer is extremely quiet and requires very little maintenance. The control panel is clearly laid out and simple to operate. Additionally, the horsePRO PowerTrainer is fitted with three safety switches, two for emergency stop, one in front and one behind, plus a photo electric beam which switches the treadmill off immediately should a horse stumble or have difficulties. An installed brake in the motor disables the band from moving while the horse is being led on or off.



TECHNICAL DATA for Step Trainer

Length:	3950 mm
Length with entry and exit ramps:	6000 mm
Width:	1500 mm
Width of rubber:	1000 mm
Height:	1700 mm
Height (maximum) :	2000 mm
Engine:	5,5 KW, 380 V
Hydraulics:	2,2 KW, 380 V
Weight:	ca. 1,6 to
Gradient:	0-6%
Speed:	0-13 Km/h

Control panel with settings

Machine's power connection 5 x 16 Amp

Neutral position: Manual operation

Programmes 1 - 5: Computer controlled

Difference between Step and Trot Trainer

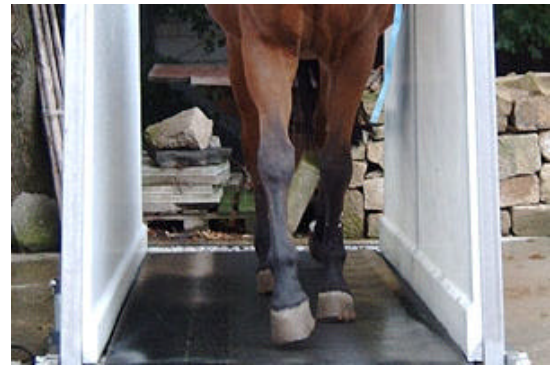
Engine:	8,0 KW, 380 V
Speed:	0-20 Km/h
Machine's power connection	5 x 32 Amp

Self-lubricating construction
(copyrighted)



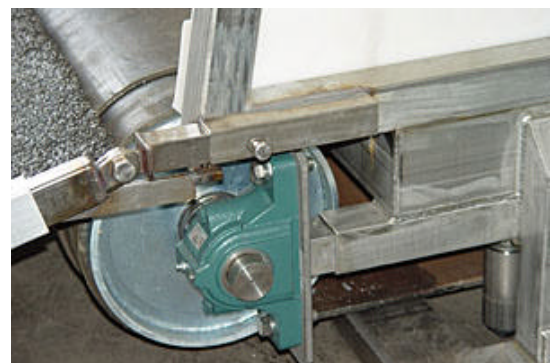
As an option there is a roof to the protection of the horses. Fundamentally the treadmill also without roof can be set up outside.

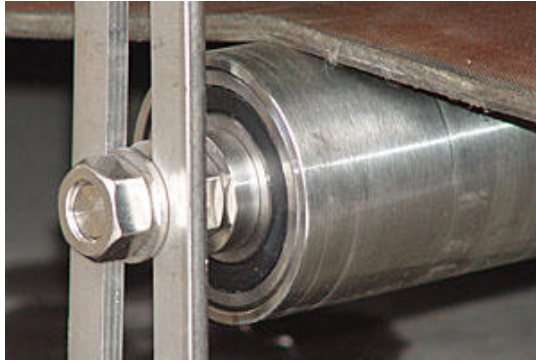
On the separately broad running surface the horses go in the horsePRO PowerTrainer not cramped and loose. PE ramp under the rubber strap is springy.



The height adjustment occurs about a hydraulic pump. Three programmed height adjustments can be moved so without problems.

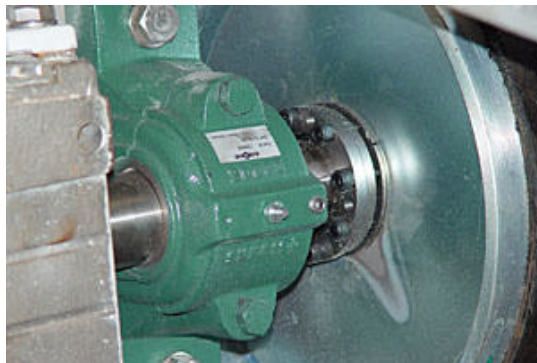
The deflection rolls have a surpassing diameter. This is used for a raised quiet running of our horsePRO Power Trainers.





The treadmill consists from a frame construction of high-grade steel. There through it has an precious design. It is Weather-Constant and maintenance-free. High Tech in accuracy.

The control centre at the horsePRO Power Trainer is simply to be treated. High functionality and easy. Depending on as the treadmill equipped is let read off at the display of running speed, weight specifications of the scale, term and program number.



Tidy workmanship and high-quality components find themselves in the horsePRO Power Trainer.

Safety is written with us in a large way. That leaves already with the safety rings and ends last but not least at the three built-in safety shutdown circuits. Long-standing empirical values come here to the carrying.





Franke Sloothaak:
"I'm convinced of the
benefits of the horsePRO PowerTrainer!"

Referenzen

Stall Kasselmann:

Hagen a.T., Dressur

[Stall Schäfer:](#)

Bürstadt, Springen

Stall Weiland:

Biblis, Springen, Olympiateilnehmer

Europameisterschaftsteilnehmer

Stall Michaelis:

Düsseldorf, Dressur

Internationaler Dressurrichter und Ausbilder

Louis van Wonterghem:

Hasselt (Frankreich) Tierarzt Pferdeklinik

Reha-Zentrum für Pferde

Gestüt Wiesenhof:

Krefeld Gestüt, Dressur, Rennsport

Hugo Simon:

Weisenheim, Springen, 2xWeltcupsieger

Gestüt Drachenhof:

Lonnig, Gestüt, Springen

Eines der erfolgreichsten Gestüte der letzten Jahre

(Spitzenposition in der FEI-Züchterrangliste)

Dr. Jorge de Rocha:

Sao Paulo (Brasilien), Dressur

Brasilianischer Meister

Weltcupsteilnehmer, Olympiateilnehmer

Alwin Schockemöhle:

Trabrennsport, Gewinner der Prix D'amerique

Reitverein Ludwigsburg:

Dressur & Springen